

CONTI+ Range

Exceptional hygiene & safety for the washroom



CONTI+ Hygiene

For safe hand hygiene

With the comprehensive CONTI+ hygiene concept, we offer you a complete range for your building. Protect your customers, employees, colleagues and yourself, safe in the knowledge that you are in compliance with hygiene requirements.

CONTI+ soap and disinfectant dispensers are available in electronic (battery operated) and manual versions. They can be mounted directly on the wall or on a floor or tabletop stand. Conveniently transportable, these dispensers are also ideal for businesses with high footfall.

For optimum hand hygiene, we recommend our pH neutral and environmentally friendly CONTI+ oXan® clean disinfectant, though the dispensers are also compatible with other solutions.

Keep safe!

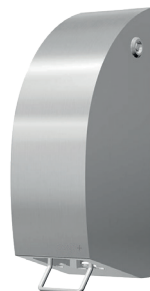
CONTI+ soap & disinfection



SteelTec DESIGN

- Soap and disinfectant dispenser
- Touch-free
- Battery operation, optional mains connection
- Wall mounted or on a stand
- LED light to indicate operation
- Matt stainless steel and vandal-proof
- 950 ml capacity

CONT17200810282



SteelTec DESIGN manual

- Soap and disinfectant dispenser
- Manually operated dispenser
- Wall mounted or on a stand
- Matt stainless steel and vandal-proof
- 1200 ml capacity

CONT17200710296 – Liquid soap

CONT17200710297 – Disinfectant



HK IRSR

- Disinfectant dispenser
- Touch-free
- Battery operation, optional mains connection
- Wall mounted or on a stand
- Stainless steel with plastic top/bottom
- 800 ml capacity

CONT17500810031



BJÖRK electronic

- Soap and disinfectant dispenser
- Touch-free IR sensor
- Battery operation, optional mains connection
- Wall mounted or on a stand
- LED light to indicate operation
- Matt black stainless steel housing
- Choice of 6 cover plates
- 950 ml capacity

CONT17600813056



BJÖRK manual

- Soap and disinfectant dispenser
- Manual operation
- Lock and universal key
- Wall mounted or on a stand
- Matt black stainless steel housing
- Choice of 6 cover plates
- 1200 ml capacity

CONT17670013125 – Liquid soap

CONT17670013145 – Disinfectant



CLEANLINE

- Soap dispenser
- Touch-free
- Battery operation, optional mains connection
- Wall mounted
- Stainless steel with plastic top/bottom
- 800 ml capacity

CONT17200810847 – Liquid soap

CONT17200810846 – Foam soap



LOKI electronic

- Soap & disinfectant dispenser
- Touch-free IR sensor
- Battery operation, optional mains
- Wall mounted or on a stand
- LED light to indicate operation
- Matt black stainless steel housing
- 500 ml capacity

CONT17600814014 – Liquid soap

CONT17600814024 – Disinfectant



LOKI manual

- Soap & disinfectant dispenser
- Manual operation
- Lock and universal key
- Wall mounted or on a stand
- Matt black stainless steel housing
- 600 ml capacity

CONT17600714044 – Liquid soap

CONT17600714054 – Disinfectant



ELEGANCE

- Soap and disinfectant dispenser
- Touch-free, battery operated
- Wall mounted or on a stand
- With fill level indicator
- Housing made of impact-resistant plastic
- 1100 ml capacity

CONT17500810717 – Liquid soap

CONT17500810718 – Disinfectant

Additional colours, designs and models available – just ask us for more information.

CONTI+ soap & disinfection



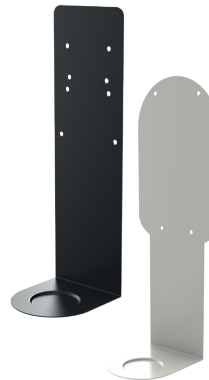
Washbasin and floor stands

- For mounting the SteelTec, BJÖRK, LOKI, HK IRSR and ELEGANCE disinfectant dispensers
- With or without drip tray
- Portable, for use in highly frequented areas or at entrances
- Made of steel and aluminium in matt black and other colours

CONT43600073181 – Floor stand 155 cm

CONT43600083176 – Washbasin stand 65 cm

CONT43600073135 – Floor stand 140 cm



Drip tray

- For mounting the SteelTec, BJÖRK, LOKI and ELEGANCE disinfectant dispensers on the wall
- Wall mounted
- Integrated tray for drips, preventing slip hazards.
- Made of powder coated steel in matt black and other colours

CONT44600053172 – SteelTec, BJÖRK, LOKI

CONT44500053185 – ELEGANCE



SC 7501 | SC 7511 – small

- SC 7501 Disinfectant dispenser
- SC 7511 Liquid soap dispenser incl. nozzle for conversion to disinfectant dispenser (included in standard delivery)
- Touch-free due to R-S sensor
- Battery operated, plastic (ABS)
- Wall mounted
- 500 ml capacity

CONT17500817511 – Liquid soap

CONT17500817501 – Disinfectant



SC-268L

- Soap & disinfectant dispenser
- Manual operation
- Wall mounted
- Aluminium housing
- Stainless steel pump handle
- 1000 ml capacity

CONT17700710268



Wall soap dispenser

- Soap dispenser
- Manual operation
- Wall mounted
- Theft-proof fixing, lockable from above
- Satin stainless steel
- 1000 ml capacity

CONT17200710305



Wall soap dispenser

- Soap dispenser
- Wall mounted with 2 drilling holes
- Stainless steel matt or chrome plated
- 150 ml capacity

CONT17300710150 – Chrome

CONT17200710150 – Stainless steel



Washbasin soap dispenser, short

- Soap dispenser for washbasin mounting
- Manual operation
- Tamper-proof dosing pump
- Liquid soap refilled from above
- Plastic refill container
- Chrome
- 500 ml capacity

CONT17300730062



Washbasin soap dispenser, long

- Soap dispenser for washbasin mounting for a panel thickness of up to 50 mm
- Manual operation
- With reservoir, refillable from above and below
- Pumping height: approx. 1500 mm
- 1000 ml capacity

CONT17200731090 – 90 mm spout

CONT17200731149 – 149 mm spout



Refill container

- Refill container for liquid soap dispenser
- Plastic
- 500 ml capacity

CONO750500



Soap refill container

- Liquid soap
- pH neutral
- Chloride and halogen free

CONO750001 – 1000 ml

CONO750010 – 10000 ml

CONTI+ hand dryers

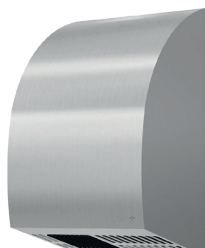


SteelTec AE DESIGN

- Hand dryer
- Touch-free IR sensor
- With induction motor
- Adjustable activation distance
- Adjustable air speed
- Wall mounted
- Stainless steel

CONT21200810280 – Matt stainless steel

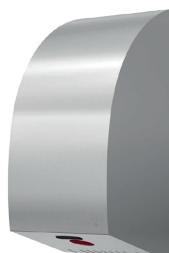
CONT21100810290 – Polished stainless steel



SteelTec MINI DESIGN

- Hand dryer
- Touch-free IR sensor
- With induction motor
- Adjustable activation distance
- Adjustable air speed
- Wall mounted
- Matt stainless steel

CONT21200810281



SteelTec TURBO DESIGN

- Hand dryer
- Touch-free IR sensor
- Powerful commutator motor
- Adjustable activation distance
- Adjustable air speed
- Wall mounted
- Matt stainless steel

CONT21200810288



BJÖRK

- Hand dryer
- Touch-free IR sensor
- Powerful commutator motor
- LED light to indicate operation
- Adjustable activation distance
- Adjustable air speed
- Matt black stainless steel housing

CONT21600813006



LOKI

- Hand dryer
- Touch-free IR sensor
- Powerful commutator motor
- LED light to indicate operation
- Adjustable activation distance
- Adjustable air speed
- Matt black stainless steel housing

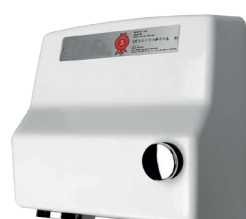
CONT21600814004



AE hand dryer

- Touch-free IR sensor
- Wall mounted
- With induction motor
- White

CONT21500810261



Hand and hair dryer

- Touch-free operation
- Wall mounted
- With pushbutton activation
- With induction motor
- White

CONT26500710100



TURBO low noise hand dryer

- Touch-free IR sensor
- Wall mounted
- Extremely hygienic, easy to service
- Electronic time switch
- Powerful commutator motor with carbon brushes
- Brushed stainless steel / white enamelled

CONT21500810346 – White

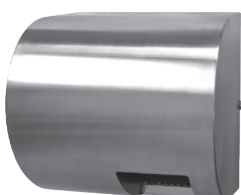
CONT21200810347 – Brushed stainless steel



TURBO hand dryer

- For installation behind a mirror or cabinet
- Housing and nozzle made of brushed stainless steel
- Powerful commutator motor
- Electronic time switch
- Matt stainless steel

CONT21200850244



Hand dryer

- Touch-free operation
- Wall mounted
- Noise-damped induction motor
- Robust metal housing
- Overheating protection and safety switch-off after 2 minutes of continuous operation
- Microprocessor electronics, waterproof
- Matt stainless steel

CONT21200810000



MINI hand dryer

- IR sensor and electronic time switch
- Stops 2 seconds after hands removed or after 60 seconds of continuous operation
- Induction motor without carbon brushes
- Wall mounted
- Housing: die-cast aluminium
- White

CONT21500810270



MAXI hand dryer

- Touch-free IR sensor and electronic time switch
- Robust, impact-resistant steel housing
- With a fixed outlet nozzle made of zinc with polished chrome plating
- Powerful commutator motor

CONT21500810272 – White

CONT21300810274 – Chrome plated

CONTI+ hand hygiene



SteelTec DESIGN

- Paper towel dispenser
- Wall mounted
- Vandal-proof lock
- Matt stainless steel
- Capacity: 400 sheets of 2-layer Z/C fold paper towels (max. 95x250 mm)

CONT16200710286



BJÖRK

- Paper towel dispenser for centre pull paper rolls
- One-handed operation
- Wall mounted
- Lock and universal key
- Matt black stainless steel housing
- Choice of 6 cover plates

CONT16670013275



LOKI

- Paper towel dispenser for Z-fold paper towels
- Paper towels max. 85x260 mm
- One-handed operation
- Wall mounted
- Visible paper towel level
- Lock and universal key
- Matt black stainless steel housing

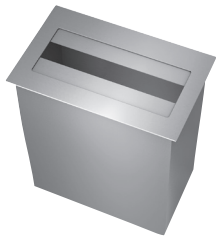
CONT16670014104



Paper towel dispenser, surface mounted

- For wall mounting, with 3 drilling holes
- Lockable from above
- Matt stainless steel

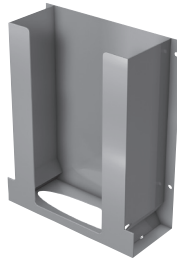
CONT16200010000



Paper towel dispenser, washbasin

- For vertical or horizontal washbasin installation
- Paper issued from the front or above
- Capacity: approx. 500 folded towels
- Matt stainless steel

CONT16200030000



Paper towel dispenser, behind mirror

- For installation behind a mirror
- Paper issue below
- Filling from top
- Capacity: approx. 400 mm

CONT16200050000



Sanitary bag dispenser

- For wall mounting, with 2 drilling holes
- Matt stainless steel
- Capacity: 1 pack containing 30 bags

CONT16200040130



Sanitary bags

- LDPE
- White
- 750 bags (25 refill boxes with 30 bags in each)
- Dimensions (WxHxD): 85x125x20 mm (refill box)

CONO741000



Paper towels

- Super soft
- 2-layer
- Z interfold
- White
- 5000 towels (20 packs with 250 towels in each)

CONO740000



Mesh basket

- For paper waste
- For use with or without waste bags
- Wire mesh
- With wall bracket
- Wall mounted or freestanding
- Stainless steel mesh, plastic coated
- 25 litre volume

CONT18500000640 – White

CONT18400000640 – Silver coloured (Rilsan coated)

CONTI+ waste and sanitary bins



SteelTec DESIGN

- Waste and sanitary bin
- With hinged lid
- Wall mounted
- Fully welded, rustproof inner bin
- Vandal-proof lock
- Matt stainless steel, capacity: 11 litres

CONT18270710279



SteelTec DESIGN

- Waste and sanitary bin
- Self-closing swing lid
- Wall mounted
- Fully welded, rustproof inner bin
- Vandal-proof lock
- Matt stainless steel

CONT18270710294 – 12 litres
CONT18270710284 – 30 litres



BJÖRK

- Waste bin
- Wall mounted
- Lock and universal key
- Door that opens at the side
- Capacity: 18 litres

CONT18670013325



LOKI

- Waste bin
- Wall mounted
- Strong front panel with narrow window
- Easy replacement of rubbish bag
- Capacity: 23 litres
- Matt black stainless steel housing

CONT18670014094



Wastepaper bin, wall mounted or floor standing

- For wall mounting with 3 drilling holes and lockable from above
- Floor standing with 4 rubber pads as feet
- Matt stainless steel

CONT18200010602 – Wall mounted
CONT18200060640 – Floor standing



Paper waste bin, wall

- For wall installation
- With mounting frame
- Lockable from the front
- Matt stainless steel

CONT18200040644



Flush mounted combination

- Sanitary and waste bin
- Wall installation
- Sanitary bag dispenser and waste bin, mounting frame
- Cover and lock mechanism
- Lockable from the front
- Matt stainless steel

CONT16200040461



Flush mounted combination

- For wall installation
- Consists of a paper towel dispenser and paper waste bin
- With mounting frame
- Lockable from the front
- Matt stainless steel

CONT19200041060



SteelTec DESIGN

- Sanitary bin
- Wall mounted
- With hygienic tip-up lid
- Fully welded, rustproof inner bin
- Vandal-proof lock
- Matt stainless steel
- Capacity: 7 litres

CONT18270710283



BJÖRK

- Sanitary bin
- Wall mounted
- With hinged lid
- Inner, spring-loaded bag holder
- Matt black stainless steel housing
- Capacity: 12 litres

CONT18670013305

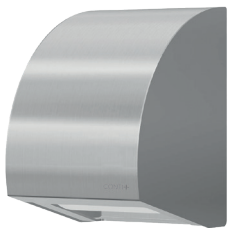


Sanitary bin

- Wall mounted with 3 drilling holes
- With integrated compartment for sanitary bags
- With hinged lid
- Matt stainless steel

CONT18200010305

CONTI+ WC equipment



SteelTec DESIGN, 1 roll

- Toilet paper holder
- 1 standard paper roll
- Wall mounted
- Easy access when replacing paper rolls
- Matt stainless steel

CONT13200710277



SteelTec DESIGN, 2 rolls

- Toilet paper holder
- 2 standard paper rolls
- Wall mounted
- Easy access when replacing paper rolls
- Matt stainless steel

CONT13200710278



SteelTec DESIGN

- Toilet paper holder
- Various roll configurations
- Wall mounted
- Vandal-proof lock
- Easy access when replacing paper rolls
- Matt stainless steel

CONT13200710285 – 4 standard paper rolls

CONT13200710287 – 1 maxi paper roll

CONT13200710289 – 1 standard + 1 maxi



BJÖRK, 2 standard rolls

- Toilet paper holder
- 2 standard paper rolls
- Wall mounted
- Powder coated stainless steel housing, matt black

CONT13600713375



BJÖRK, jumbo & 1 standard roll

- Toilet paper holder
- 1 jumbo and 1 standard paper roll
- Wall mounted
- Powder coated stainless steel housing, matt black

CONT13600713355



LOKI, 2 standard rolls

- Toilet paper holder
- 2 standard paper rolls
- Wall mounted
- Easy access when replacing paper rolls/key for the lock
- Matt black stainless steel housing

CONT13600714074



LOKI, 1 maxi roll

- Toilet paper holder
- 1 maxi paper roll
- Wall mounted
- Visible paper towel level
- Key for the lock
- Matt black stainless steel housing

CONT13600714084



Toilet paper holder

- Toilet paper holder
- Free fillable with 1 large roll
- Wall mounted
- Roll stop function and fill level indicator
- Lockable
- Satin stainless steel

CONT13200010300



Additional colours, designs and models available – just ask us for more information.



CONTI+ faucets



Washbasin faucets (ultra)

- Touch-free, electronically controlled
- With/without temperature control
- Stop valve included
- Battery, other models
- 3 heights, chrome plated, other colours

162.040.11 – Without temperature control/waste set

162.001.11 – With temperature control/waste set



Washbasin faucets (lino/tipolino)

- Touch-free, electronically controlled or with electronic start/stop button
- With/without temperature control, non-pressurised
- With/without anti-scalding protection
- Battery, other models
- Chrome plated

120.040.11 – Without temperature control/waste set

120.001.11 – With temperature control/waste set



lino AS upright washbasin faucet

- Touch-free, electronically controlled
- With temperature control/without waste set
- Thermostatic anti-scalding protection based on DIN EN 1111
- Fully automatic self-calibration
- Chrome plated

CONE8150208100 – Battery

CONE8150208200 – Mains power



lino PRIMUS upright faucet L40

- Touch-free, electronically controlled
- Elec. anti-scalding protection (DIN EN 1111)
- Thermostat-E for temperature control in installation under the countertop
- Separate sanitary rinses with cold, mixed and hot water
- Chrome plated

CONE8150308538 – Mains power



Washbasin faucets (iQ)

- Touch-free, electronically controlled
- With/without temperature control, non-pressurised
- Dual infrared sensors
- Battery, other models
- Chrome plated

100.040.11 – Without temperature control/waste set

100.001.11 – With temperature control/waste set



Washbasin faucets (maxx/umaxx)

- Touch-free, electronically controlled
- With/without temperature control
- IR sensor
- Without waste set
- Battery, other models
- Chrome plated

131.040.11 – Without temperature control

131.000.11 – With temperature control



Washbasin faucets (loopino)

- Touch-free, electronically controlled
- With/without temperature control, non-pressurised
- Dual infrared sensors
- Battery, other models
- Chrome plated

150.040.11 – Without temperature control/waste set

150.101.11 – With temperature control/waste set

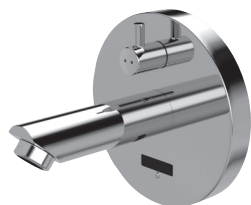


Automatic shut-off faucet (lino Softouch)

- Mechanical, hydraulically controlled
- Smooth actuation, independent of water pressure
- With/without temperature control
- CONTI+ automatic shut-off cartridge technology
- Stainless steel

CONM8110104000 – Without temperature control

CONM8110204000 – With temperature control



Flush mounted wall faucet (lino)

- Touch-free, electronically controlled
- With/without temperature control
- "Temporary off" and "continuous on" functions
- Hot water lock
- Battery, other models
- Spout: 120/170/220 mm
- Chrome plated

120.331.11 – Without temperature control/120 mm

120.371.11 – With temperature control/120 mm



Surface mounted wall faucet (CONBASE)

- Touch-free, electronically controlled
- Connection from above/behind
- Without temperature control, with IR sensor
- Cold or premixed water
- Battery, other models
- Spout: 165/290 mm
- Matt stainless steel

CONE3518178100 – Connection from above/165

CONE3519178120 – Connection from behind/290



Flush mounted wall faucet (CONGENIAL FIT)

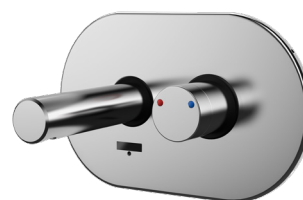
- Touch-free, electronically controlled
- IR sensor
- With temperature control/thermostat
- Battery, other models
- Angular/oval
- Spout: 170/220 mm
- Stainless steel/chrome plated

CONE7116218100 – Angular stainless steel

CONE7156218100 – Angular chrome plated

CONE7117218100 – Oval stainless steel

CONE7157218100 – Oval chrome plated





CONTI+ stainless steel washbasins



SteelTec (Lund)

- The round washbasin
- Drop-in washbasin, glued into place
- With overflow
- With overflow set
- Stainless steel on the inside
- High gloss polish on the outside

CONT02121130305



SteelTec (Malmoe)

- The oval washbasin
- Wall mounted
- Without faucet hole
- With overflow
- Matt stainless steel

CONT01211210415



SteelTec (Emden)

- The sculpted washbasin
- Wall mounted
- With integral soap tray
- With overflow set
- With faucet hole
- With plug and chain
- Matt stainless steel

CONT01212200420



SteelTec (Bergen 480)

- The deep & hygienic washbasin
- Wall mounted
- With washboard stamping at the front
- With integral hygienic edge
- Without faucet hole
- With overflow set
- Matt stainless steel

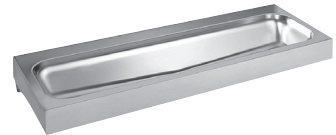
CONT01221210480



SteelTec (Bergen 530)

- The deep & hygienic washbasin
- Wall mounted
- With washboard stamping at the front
- With integral hygienic edge
- Without faucet hole
- With overflow set
- Matt stainless steel

CONT01221210530



SteelTec (Fjord)

- The wash trough
- Wall mounted
- Seamlessly pressed
- Without overflow
- Without faucet hole
- Matt stainless steel

CONT07211211201 – 1200

CONT07211211801 – 1800



SteelTec laboratory sink (Visby)

- Wall mounted
- With overflow set
- With rear panel
- With drain plug and chain
- Matt stainless steel

CONT05221210390 – 390



SteelTec utility sink (Visby)

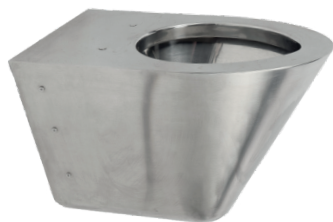
- Wall mounted
- With rear panel
- With space saving odour trap
- With/without grille
- Without faucet hole
- Matt stainless steel

CONT05211210310 – 310

CONT05211210330 – 330

CONT05211210450 – 450

CONTI+ urinals



SteelTec wall mounted WC (Malm)

- Wash-down WC, without seat
- Wall mounting, visible fixing
- No sharp edges, corners or seams
- With odour trap
- Connection from behind
- Fixed by means of mounting frame on the wall, or directly on the mounting element.
- Matt stainless steel, bright stainless steel on the inside

CONT08230010750



SteelTec urinal (Oslo)

- Standing WC
- Wall or rear panel mounted
- Vandal-proof design
- With mesh drain
- With flexible water connection
- With spray nozzle
- Matt stainless steel, bright stainless steel on the inside

CONT08200010500



SteelTec (partition)

- Urinal partition
- Wall mounted with concealed wall bracket
- Accessory for the SteelTec urinal (Oslo)
- Matt stainless steel

CONT09200010383



CONTI+ urinal flush valves



Concealed urinal flush valves U10 (lino)

- Touch-free, electronically controlled
- Robust concealed urinal flush valve
- IR sensor
- Fully fitted kit
- Battery, mains, VARIOconnect
- Matt chrome panel/white windows
- White panel/white windows

220.000.43 – Matt chrome/white
220.000.33 – White/white



Concealed urinal flush valves U18 (lino)

- Touch-free, electronically controlled
- Dual infrared sensors
- Fully fitted kit
- Battery, mains, VARIOconnect
- Front panel: toughened glass, white
- Front panel: toughened glass, black
- Mounting frame, chrome

260.000.31 – White
260.000.71 – Black



Concealed urinal flush valve U28 (iQ)

- Touch-free, electronically controlled
- Flush mounted without electrical wiring
- Dual infrared sensors
- Fully fitted kit
- Battery, mains, VARIOconnect
- Stable front panel: brushed stainless steel
- Mounting frame: chrome plated brass

201.000.01



Exposed urinal flush valve U60 (lino)

- Touch-free, electronically controlled
- Wall mounted without electrical wiring
- Robust brass housing, polished
- Dynamic IR sensor
- Stop valve with dirt filter and collar
- Chrome plated

220.100.11 – Battery
220.108.11 – Solar



Intuitive APP based control of individual faucets

Both new and existing drinking water installations need to meet numerous hygiene requirements – in Germany, for example, the German Drinking Water Ordinance (TrinkwV) 2018. With our CONTI+ Service APP, we offer an effective means to extend the necessary programming, logging and documentation of the required hygiene measures to the control units of the individual faucets.

The Service APP allows convenient management of CONTI+ shower panels, concealed showers, washbasin and urinal faucets. Thanks to the user friendly and intuitive interface, faucets can be identified and selected for very straightforward management, programming and data readings.

The APP guides users systematically and logically through all menu items and features so that they can program sanitary rinses, check and set water running times, optimise sensor ranges, save settings and usage data, and more. Used in conjunction with the BLE Converter, secure communication is established via Bluetooth® between the faucet and the required device (e.g. smartphone or tablet). All this can be done wirelessly, easily, intelligently and securely.



BLE Converter for Service APP

- For establishing the Bluetooth® connection between CONTI+ faucets and a mobile control unit such as a smartphone/tablet
- Smart faucet communication via the CONTI+ Service APP
- Displays & analysis for each faucet
- Fixed settings for each faucet
- Operating voltage: 6-12 V/DC

CONO260000



Bluetooth®
Wireless communication between Service APP and faucets via the BLE Converter



Intuitive operation
License management feature, software interface, analyses and graphics



Extensive services
Programming, logging and maintenance



Solutions for clean drinking water hygiene

Whether in existing, new or recommissioned buildings, a large proportion of today's drinking water installations are microbiologically compromised. Microbiologically compromised means that the entire drinking water installation has been contaminated by germs. This refers especially to legionella, pseudomonas and E. coli bacteria, with sometimes life threatening consequences for the public. If we consider hygiene in a wider context, a key role is also played by room hygiene, involving the "destruction of viruses, spores and bacteria; odour elimination and dust removal", as well as surface hygiene, involving the "sanitisation of work surfaces, transport surfaces and hands". Our CONTI+ oXan® disinfection solutions are available for a wide range of such applications.

Quick and straightforward drinking water analysis – with no obligation to notify health authorities.

A drinking water hygiene test is used to quantitatively determine microbiological contamination of drinking water. As neither this nor the sampling or analysis constitute an accredited test, there is no obligation to notify the relevant health authorities. The operator of the drinking water system can then take appropriate steps to ensure drinking water quality.

CONTI+ oXan® clean enables professional disinfection of surfaces and hands by simply applying and rubbing in. The ready-to-use spray bottles allow you to clean and disinfect surfaces very easily. In addition, CONTI+ oXan® clean can also be used for disinfectant dispensers.

With CONTI+ oXan® clean, all components for drinking water systems can be disinfected directly during installation – simply by spraying, with no need to wipe afterwards. At the same time, all work and storage surfaces of parts and components for the drinking water installation can be disinfected – before and during construction of the system – in order to prevent subsequent contact contamination.

By disinfecting work and storage surfaces during the production of sanitary fittings, we additionally protect drinking water and prevent the transfer of bacteria.



Drinking water hygiene test

- Quantitative total viable count (CFU) of bacteria, fungi and yeast based on comparative images
- For liquids, surfaces and powders
- Yellow: total viable count of bacteria
- Pink: evidence of fungi and yeast
- Please note: not an accredited process

CONB37001301 – 1 unit

CONB37001311 – 10 unit



CONTI+ oXan® clean disinfectant

- Residue-free elimination of germs and bacteria
- Prevention of germ multiplication
- No toxicity to mucous membranes or eyes
- No hazardous substance label
- pH neutral
- Suitable for human hygiene
- VAH (German Association for Applied Hygiene) approval for surface disinfection

CONB92100100 – 100 ml spray bottle

Ready-to-use solution

CONB92100500 – 500 ml spray bottle

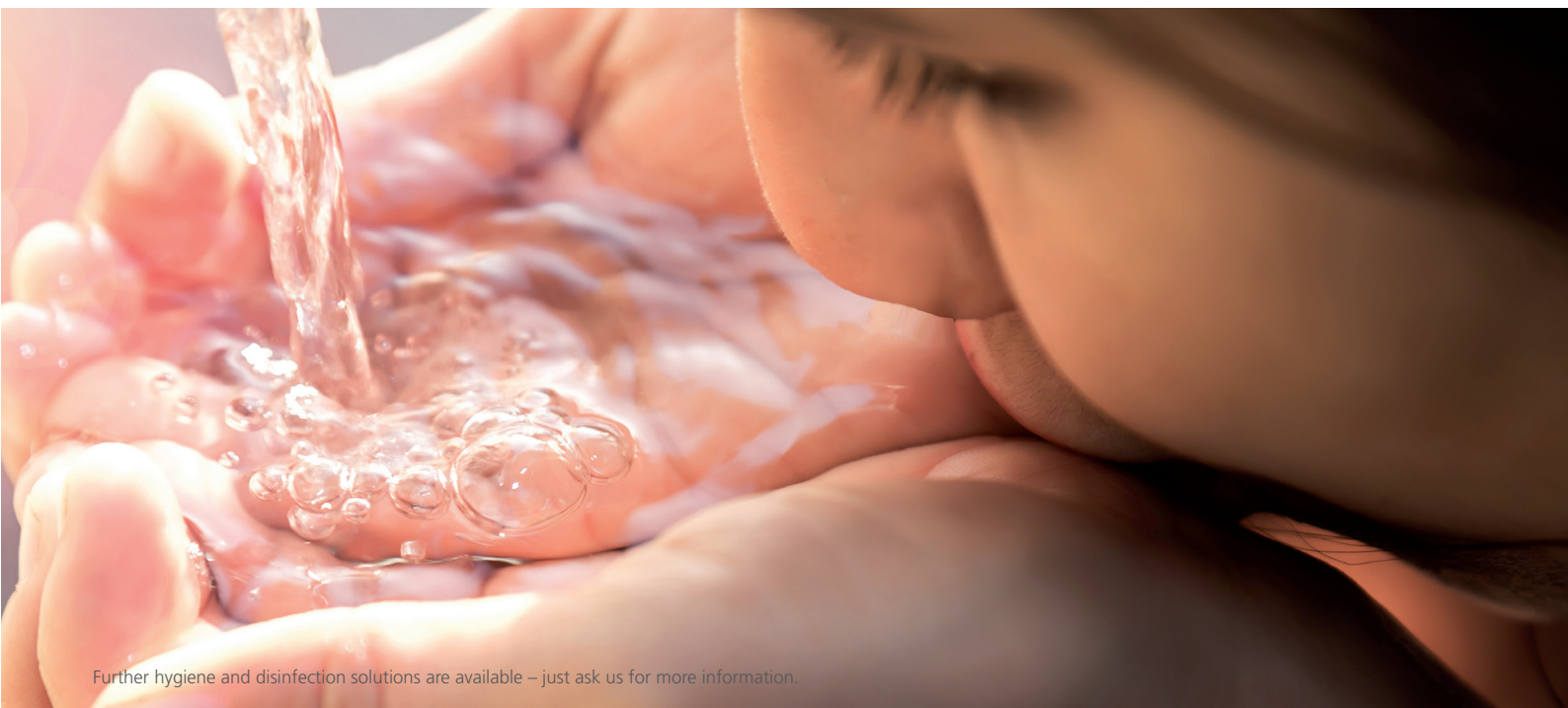
Ready-to-use solution

CONB92205010 – a 10 l bag-in-box

Ready-to-use solution

CONB92200010 – 10 l bag-in-box

Concentrate



Reliable & innovative

For over 45 years, the CONTI+ brand has been recognised for flexible and holistic shower room and washroom solutions for public, semi-public and commercial environments as well as the health sector.

Known for its innovative technology and high grade materials, the brand has gained a reputation for unfailing quality. With a wide-ranging product portfolio and many years of experience creating custom designs, CONTI+ is now widely recognised among design engineers and architects for its valuable contribution to their projects. Every last detail is contemplated when developing tailor-made products, resulting in smart, individual solutions to suit a plethora of applications and equipment. The choice of shower and washbasin fittings encompasses a variety of colours and finishes as well as options for surface or flush mounting. Naturally sustainability, hygiene and reliability are prime considerations in the development of all products.

Thanks to its dependable quality and innovative technology, CONTI+ has remained a trusted brand throughout the world for over 45 years.



Certificates are product related and not valid in general

CONTI Sanitärarmaturen GmbH
Hauptstraße 98
35435 Wettenberg | Germany
Tel. +49 641 98221 0
Fax +49 641 98221 50
info@conti.plus
www.conti.plus

Member of Fortuna Group 

