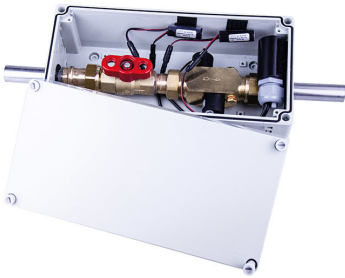


## CONFLUSH BLE mains



CONFLUSH flushing unit for microbiological sanitation with disinfectant solution drinking water hygiene

Flushing disinfectant solution drinking water hygiene through the entire drinking water installation for automatic flushing of terminal strands in buildings without automatic flushing fittings.

- Version with two bistable solenoid valves
- Opening and closing of the control by current pulses
- Object-specific flushing times
- T-piece installation on site
- Outer diameter stainless steel connection pipes: 22 mm
- with pre-blocking
- free discharge into the drain or overflow
- Flow rate: approx. 30 l/min at 3 bar

Execution via CONTI+ Service APP:

Consisting of:

- Plastic box with integrated DN20 flushing unit
- BLE Converter

Mains (12 V/DC)

Control of hygiene flushing via real-time clock via the CONTI+ Service APP.

Note:

A separate CONO150000 or CONO 140000 power supply unit is required for the electrical connection, see chapter Accessories.

### Attributes:

Sorting: 1424,