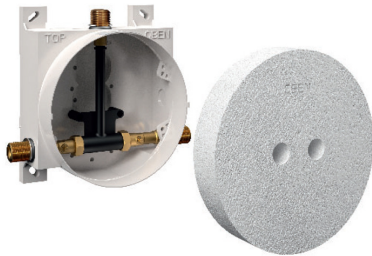


CONBOX raw-assembling set for concealed shower, with thermostat, DN15



CONBOX raw-assembling set for concealed shower, thermostat, DN15

Raw-assembling set for mechanical and electronic shower equipment based on the adaptive multifunctional water path CONGENIAL with thermostat, designed as flush-mounted shower in nominal width DN15. Application area in new construction and renovation in public, semi-public and commercial sanitary facilities.

Consisting of:

- Concealed shower box CONBOX
- Recessed enclosure: ABS, dimensions (WxHxD minimum): 232x272x96 mm, self-supporting
- Fastener brackets for mounting material with max. diameter 8 mm
- Wall outlet diameter 230 mm can be cut to length of tile front edge, condensate drain slope
- Sealed and sound-insulated brass entrances and exits, inlet with shut-off valves R 1/2
- Detachable connecting coupling for exchange the flushing piece on the water path
- Mounting depth with final assembly set: 96-110 mm
- Flushing piece: ABS, waterless and hygienically, tested for leakage
- Protective plug: EPS, dimension (ØxD) 226x40 mm
- Gasket ring: PE, dimensions (WxH) 450x450 mm, with expansion zone
- Connection to cold and hot water

Attributes:

Nominal connection width: DN15, 1/2 inch

Mixture: With thermostat,

Sorting: 390,