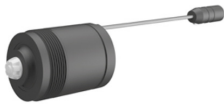


Solenoid valve cartridge 6V/DC, 3W, bistable, with 90 mm connection cable and plug, IP68



CONTI+ solenoid valve cartridge

For installation in CONTI+ fitting bodies

with connection thread M28x1

with 90 mm connection cable and 2-pin connector plug

Material: plastic housing

Technical Data:

Operating voltage: 6 V/DC

Input: 3 W

Operating pressure: 0,3 - 10,0 bar

Flow rate: 0,05 l/s (automatic flow regulator)

Water temperature max.: 70 °C (short-term up to 80°C for thermal disinfection)

Protection: IP68